

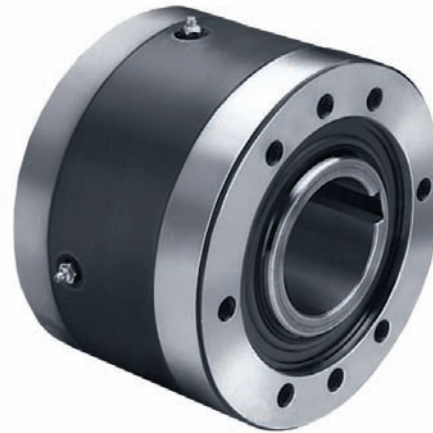
Marland Sprag Clutch Selection Guide

Marland Interchange

Marland		Formpsrag		Morse		Ringspann	
Unit	Maximum Torque (lb.ft.)	Unit	Maximum Torque (lb.ft.)	Unit	Maximum Torque (lb.ft.)	Unit	Maximum Torque (lb.ft.)
RMS-12	275	FSO & HPI 300	275	MG, MI & MO 300A	275	FRS-300	295
RMS-14	300	FSO & HPI 400	300	MG, MI & MO 400A	400	FRS-400	340
RMS-21	1,175	FSO & HPI 500	1,175	MG, MI & MO 500A	1,175	FRS-500	1,130
RMS-26	1,550	N/A	N/A	N/A	N/A	FRS-550	1,885
RMS-32	2,250	FSO & HPI 600	2,250	MG, MI & MO 600A	2,250	FRS-600	2,325
RMS-40	2,375	N/A	N/A	N/A	N/A	FRS-650	3,200
RMS-47	5,000	FSO & HPI 700	5,000	MG, MI & MO 700A	5,000	FRS-700	6,800
RMS-55	7,000	FSO & HPI 750	7,000	MG, MI & MO 750	7,000	FRS-750	10,400
RMS-72	13,000	FSO & HPI 800	13,000	MG, MI & MO 800	13,000	FRS-800	14,500
RMS-87	18,000	FSO & HPI 900	18,000	MG, MI & MO 900	18,000	FRS-900	14,500
RMS-112	27,000	FSO & HPI 1027	27,000	MG, MI & MO 1000	25,000	FRS-1000	29,400
RMT-14	300	C/T-400	300	MR-400A*	400	FRZ-400	230
RMT-21	1,175	C/T-500	1,175	MR-500A*	1,175	FRZ-500	600
RMT-32	2,250	C/T-600	2,250	MR-600A*	2,250	FRZ-600	2,160
RMT-47	5,000	C/T-700	5,000	MR-700*	5,000	FRZ-700	6,275
RMT-55	7,000	C/T-750	7,000	MR-750*	7,000	FRZ-750	9,900
RMT-72	13,000	C/T-800	13,000	MR-800*	13,000	FRZ-800	12,000
RMT-87	18,000	C/T-900	18,000	MR-900*	18,000	FRZ-900	N/A
RMT-112	27,000	C/T-1027	27,000	MR-1000*	25,000	FRZ-1000	N/A
RMI-14	220	C/T-400	220	MO-400*	400	FRX-400	190
RMI-21	575	C/T-500	575	MO-500*	1,175	FRX-500	580
RMI-26	693	C/T-550	693	N/A	NA	FRX-550	950
RMI-32	1,261	C/T-600	1,261	MO-600*	2,250	FRX-600	1,275
RMI-40	2,065	C/T-650	2,065	N/A	N/A	FRX-650	2,030
RMI-47	4,278	C/T-700	4,278	MO-700*	5,000	FRX-700	3,000
RMI-55	6,638	C/T-750	6,638	MO-750*	7,000	FRX-750	5,750
RMI-72	17,407	C/T-800	17,407	MO-800*	13,000	FRX-800	11,800
RMI-87	Consult Factory	C/T-900	N/A	MO-900*	18,000	FRX-900	23,600
RMI-112	Consult Factory	C/T-1027	N/A	MO-1000*	25,000	N/A	N/A

* No Lift-Off

Marland	Formsprag	Morse	GMN	Ringspann
CSK-8	CSK-8	N/A	N/A	ZZ 8
CSK-12	CSK-12	N/A	N/A	ZZ 6201
CSK-15	CSK-15	N/A	N/A	ZZ 6202M
CSK-17	CSK-17	KK-17	FK-6203	ZZ 6203M
CSK-20	CSK-20	KK-20	FK-6204	ZZ 6204M
CSK-25	CSK-25	KK-25	FK-6205	ZZ 6205M
CSK-30	CSK-30	KK-30	FK-6206	ZZ 6206S
CSK-35	CSK-35	KK-35	N/A	ZZ 6207
CSK-40	CSK-40	N/A	N/A	ZZ 40
AS-6	AS-6	NSS-6	N/A	N/A
AS-8	AS-8	NSS-8	N/A	FCN-8R
AS-10	AS-10	NSS-10	N/A	FCN-10R
AS-12	AS-12	NSS-12	N/A	FCN-12R
AS-15	AS-15	NSS-15	N/A	FCN-15R
AS-20	AS-20	NSS-20	N/A	FCN 20R
AS-25	AS-25	NSS-25	N/A	FCN 25R
AS-30	AS-30	NSS-30	N/A	FCN 30R
AS-35	AS-35	NSS-35	N/A	FCN 35CF
AS-40	AS-40	NSS-40	N/A	FCN 40CF
AS-45	AS-45	NSS-45	N/A	FCN 45CF
AS-50	AS-50	NSS-50	N/A	FCN 50CF
AS-55	AS-55	N/A	N/A	FCN 55CF
AS-60	AS-60	NSS-60	N/A	FCN 60CF
AS-80	AS-80	N/A	N/A	FCN 80R



Marland Clutch
 485 S. Frontage Rd., Ste 330 • Burr Ridge, IL 60527
 630-455-1752 • Fax: 630-455-1794
 info@marland.com

For application assistance:
 1-800-216-3515

Low Speed Backstop Selection Guide



Marland Interchange

Marland					Falk			Formsprag			Morse		
BC-MA Series Size	Torque lb.ft.	Max. Bore	BC-M Series Size	BC Series Size	Size	Torque lb.ft.	Max. Bore	Size	Torque lb.ft.	Max. Bore	Size	Torque lb.ft.	Max. Bore
BC-3MA	3,000	2-15/16	BC-2M	BC-200	No. Equiv.			No. Equiv.			No. Equiv.		
BC-6MA	6,000	3-11/16	BC-4M	BC-275	No. Equiv.			LLH-700	4,000	2-15/16	No. Equiv.		
BC-12MA	12,000	4-1/2	BC-8M	BC-350	NRT-1075	10,000	3-15/16	LLH-750 LLH-800	6,800 11,500	3-7/16 4-7/16	CB-7 CB-12	6,500 12,000	4 5-1/4
BC-18MA	18,000	5-7/16	BC-12M	BC-425	NRT-1085	16,000	5-3/16	LLH-900	18,000	5-7/16	No. Equiv.		
BC-27MA	27,000	6-1/2	BC-18M	BC-500	NRT-1095	28,000	5-1/2	LLH-1027	27,000	7	CB-19	19,000	6-1/4
BC-45MA	45,000	7	BC-30M	BC-550	NRT-1105	45,000	7-7/16	LLH-1051	45,000	7	CB-30 CB-45	30,000 45,000	7-3/4 8-1/2
BC-63MA	63,000	8	BC-42M	BC-600	No. Equiv.			No. Equiv.			No. Equiv.		
BC-90MA	90,000	9	BC-60M	BC-700	NRT-1115	75,000	8-7/16	LLH-1250 LLH-1300	65,000 90,000	9 10	CB-65	65,000	9-1/2
BC-135MA	135,000	10	BC-90M	BC-800	NRT-1125	105,000	9	LLH-1375	135,000	11	No. Equiv.		
BC-180MA	180,000	11-3/4	BC-120M	BC-900	NRT-1135	150,000	10-1/2	No. Equiv.			CB-150	150,000	11-1/2
BC-240MA	240,000	14	BC-160M	BC-1000	NRT-1145	212,000	12	LLH-2000	200,000	13-1/4	No. Equiv.		
BC-375MA	375,000	18	BC-250M	BC-1150	NRT-1155 NRT-1165	249,000 346,000	13-1/4 15-1/2	LLH-2400 LLH-3500	265,000 375,000	15-1/2 20	CB-250	250,000	13-1/2
BC-540MA	540,000	21	No. Equiv.	No. Equiv.	NRT-1175	519,000	17-1/2	No. Equiv.			No. Equiv.		
BC-720MA	720,000	21	No. Equiv.	No. Equiv.	NRT-1185	747,000	20	LLH-5000	560,000	20	No. Equiv.		

Marland					Stevens Adamson (S.A.)			Tsubaki			McNally Wellman		
BC-MA Series Size	Torque lb.ft.	Max. Bore	BC-M Series Size	BC Series Size	Size	Torque lb.ft.	Max. Bore	Size	Torque lb.ft.	Max. Bore	Size	Torque lb.ft.	Max. Bore
BC-3MA	3,000	2-15/16	BC-2M	BC-200	No. Equiv.			BS-65 BS-75	1,158 1,808	65 mm 75 mm	3RB	3,000	3
BC-6MA	6,000	3-11/16	BC-4M	BC-275	HD-215	3,333	2-15/16	S-85 BS-95	4,342 5,788	85 mm 95 mm	4RB	5,000	4
BC-12MA	12,000	4-1/2	BC-8M	BC-350	HD-315 HD-415	6,667 11,667	3-11/16 3-15/16	BS-110 BS-135	7,960 11,577	110 mm 135 mm	5RB	8,000	5
BC-18MA	18,000	5-7/16	BC-12M	BC-425	No. Equiv.			BS-160	18,100	160 mm	6RB	15,000	6
BC-27MA	27,000	6-1/2	BC-18M	BC-500	HD-600 HD-700	20,833 27,083	6 7	BS-200	27,485	200 mm	7RB	23,000	7
BC-45MA	45,000	7	BC-30M	BC-550	No. Equiv.			BS-220	36,165	220 mm	8RB	35,000	8
BC-63MA	63,000	8	BC-42M	BC-600	HD-800	45,833	8	No. Equiv.			9RB	50,000	9
BC-90MA	90,000	9	BC-60M	BC-700	HD-900	66,667	9	BS-250 BS-270	65,100 90,415	250 mm 270 mm	No. Equiv.		
BC-135MA	135,000	10	BC-90M	BC-800	HD-1000	92,500	10	BS-300	130,200	300 mm	No. Equiv.		
BC-180MA	180,000	11-3/4	BC-120M	BC-900	HD-1200	145,833	12	No. Equiv.			No. Equiv.		
BC-240MA	240,000	14	BC-160M	BC-1000	HD-1400	208,333	14	BS-335 BS-350	195,290 231,455	335 mm 350 mm	No. Equiv.		
BC-375MA	375,000	18	BC-250M	BC-1150	HD-1600	316,667	16	BS-425	376,115	425 mm	No. Equiv.		
BC-540MA	540,000	21	No. Equiv.	No. Equiv.	HD-1800	416,667	18	BS-450	506,310	450 mm	No. Equiv.		
BC-720MA	720,000	21	No. Equiv.	No. Equiv.	No. Equiv.			No. Equiv.			No. Equiv.		



Marland Clutch
 485 S. Frontage Rd., Ste 330 • Burr Ridge, IL 60527
 630-455-1752 • Fax: 630-455-1794
 info@marland.com

For application assistance:
 1-800-216-3515